

Cargo Desiccant - Container Dri™ II Available Configurations and their Installation

Container Dri™ II cargo desiccant is available in a variety of configurations to meet every shipping need. Placed strategically out of the way of cargo, Container Dri II will effectively remove moisture from the air, lowering the dew point to prevent »container rain« from damaging goods in transit.

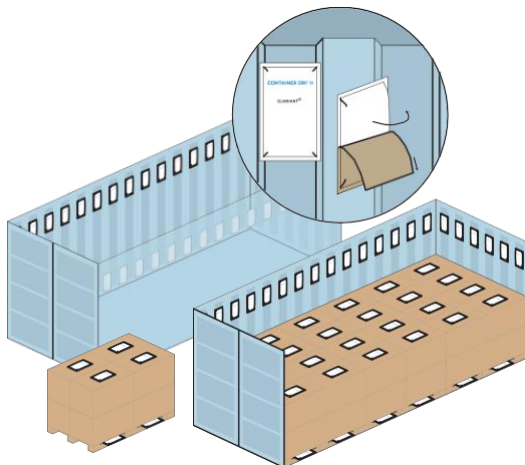
Individual bags

Individual bags, with or without adhesive backing, can be placed inside corrugated grooves, spread throughout the container, or adhered to cargo or slip sheets and easily placed atop cargo.

WEIGHT:
125 g

DIMENSIONS:
5.25" x 10.5" / 145 mm x 255 mm

USAGE REC.:
20 ft container: 32–36
40 ft container: 64–72



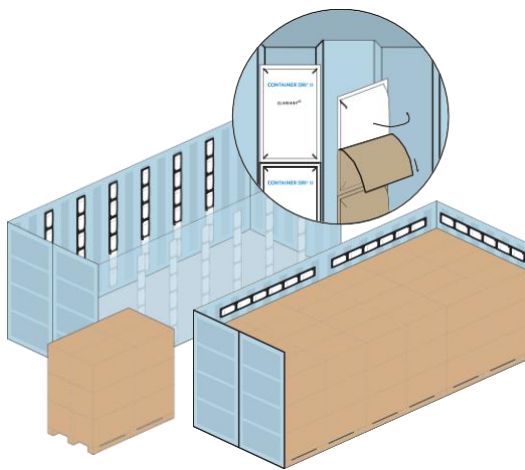
Adhesive strips

Adhesive strips are affixed within the corrugated grooves of shipping containers and lay flat, which is an ideal option for fully loaded containers. The strips can also be adhered to the container horizontally.

WEIGHT:
750 g

DIMENSIONS:
5.25" x 63" / 145 mm x 1520 mm

USAGE REC.:
20 ft container: 5–6
40 ft container: 10–12



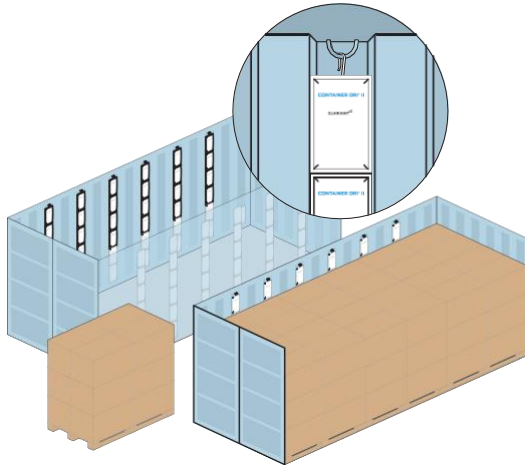
Hanger strips

Similar to adhesive strips, hanger strips are hung from eye hooks inside the shipping container. The strips lay flat within the corrugated grooves along the walls, making them ideal for fully loaded shipping containers.

WEIGHT:
750 g

DIMENSIONS:
5.25" x 63" / 145 mm x 1520 mm

USAGE REC.:
20 ft container: 5–6
40 ft container: 10–12



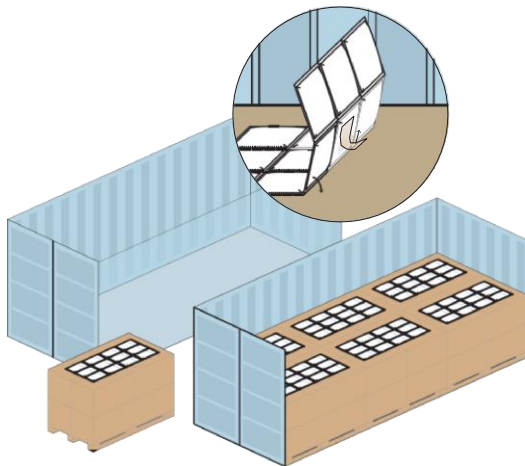
Blankets

Configured as a »blanket« featuring two adhesive strips, the blanket may be adhered directly to cargo or to a cardboard slip, then placed atop cargo.

WEIGHT:
1500 g (3 x 4 à 125 g)

DIMENSIONS:
16.93" x 9.25" / 430 mm x 235 mm

USAGE REC.:
20 ft container: 3–4
40 ft container: 5–8



Poles and packs

Poles and packs in a hard shell are hung from the eye hooks inside shipping containers. Packs are positioned up high, while poles lie within the corrugated grooves along the walls, each out of the way of cargo.

PACK 1500

WEIGHT: 1500 g

DIMENSIONS: 16.93" x 18.50" / 430 mm x 470 mm

USAGE REC.: 20 ft container: 3–4
40 ft container: 5–6

PACK 750

WEIGHT: 750 g

DIMENSIONS: 16.93" x 9.25" / 430 mm x 235 mm

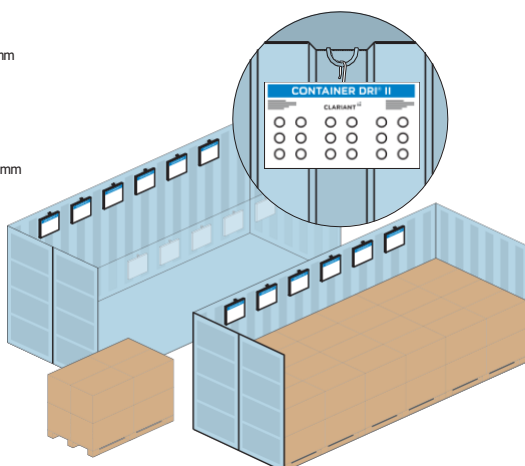
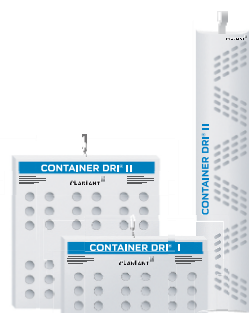
USAGE REC.: 20 ft container: 5–6
40 ft container: 10–12

POLE

WEIGHT: 750 g

DIMENSIONS: 5.25" x 39.75" / 133 mm x 1010 mm

USAGE REC.: 20 ft container: 5–6
40 ft container: 10–12



Plus

Plus come with a carabiner and strap to hang them from the eye hooks inside shipping containers. They are positioned up high, out of the way of cargo.

WEIGHT:
1500 g (3 x 4 à 125 g)

DIMENSIONS:
20.5" x 22" I 521 mm x 559 mm

USAGE REC.:
20 ft container: 3–4
40 ft container: 5–8

